

# SMI Thought Leadership Councils

Steering  
Committee

**Co-Chairs:**

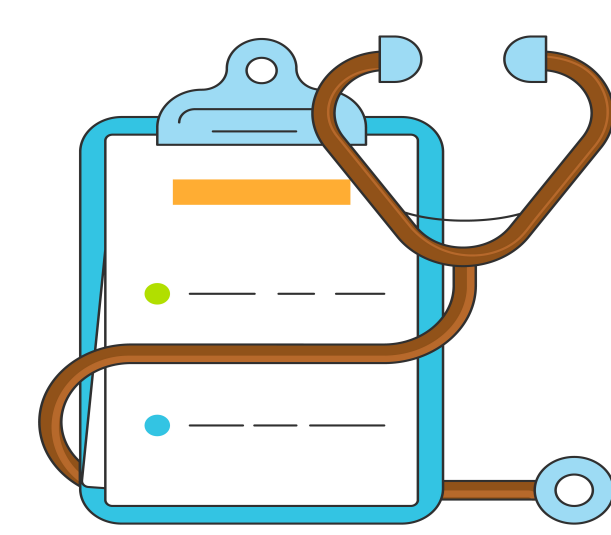
**Donna Drummond - Northwell Health**  
**Steve Gundersen - SMI Board Chair**

[CONSULTATION & SUPPORT]

Physician Advisory Council

**Co-Chairs:**

**Lisa Ishii, M.D. - Johns Hopkins Health System**  
**Rohan Sonawane, M.D., MBA - Medtronic**



Clinical  
Integration



Collaboration



Diversity and  
Inclusion



Resilience  
and  
Transparency

**Co-Chairs:**

**Burton Fuller - Johns Hopkins Health System**

**Jim Goodman - Smith & Nephew**

Lead the industry to an effective and sustainable integrated relationship between the supply chain, clinical teams, and physician supply chain leaders

**Co-Chairs:**

**Jim Francis - Mayo Clinic**  
**Susan Louis - Staples, Inc.**

Build upon and expand SMI's commitment to leading and modeling collaborative relationships between trading partners

**Co-Chairs:**

**Bill Moir - Henry Ford Health System**  
**Robert Rajalingam - Cardinal Health**

Identify and promote effective approaches that foster a culture of Diversity and Inclusion for our team members in the workplace and our supply chain

**Co-Chairs:**

**Amanda Chawla - Stanford Health Care**  
**Alan Mavis - Baxter**

Create and foster an understanding of the critical elements that will support the imperative of establishing and sustaining a more resilient and transparent healthcare supply chain

**Key Functions  
of the Councils  
include:**

- Developing a strategic and comprehensive approach to SMI pillars that endorses best practices, tracks emerging trends, and identifies and creates impactful solutions to ongoing challenges
- Generating recommendations for educational webinars, program content, and articles
- Identifying and providing oversight of initiatives
- Recommending/implementing tools from external organizations
- Creating innovative and progressive solutions to anticipated supply chain challenges

